

Peerless® Boilers



PeerlessBoilers.com

Peerless® PureFire® 625 & 750 High Efficiency Condensing Commercial Gas Boilers

Check out our entire line of PureFire® sizes ranging from 50 MBH to 4,000 MBH!

Features and Benefits



- ✓ **Up to 98.0% Thermal Efficiency**
- ✓ **Low Pressure Drop Through Stainless Steel Heat Exchanger**
Reduces Pump Requirements
- ✓ **Direct-vent/Sealed Combustion or Indoor Air**
- ✓ **Environmentally Friendly**
LoNOx Operation
- ✓ **Cascade Capable** - up to 8 Boilers
- ✓ **One Year Parts and Labor Warranty Included with Every Boiler!***

*boiler and installer must be registered for warranty to take effect



Standard Equipment

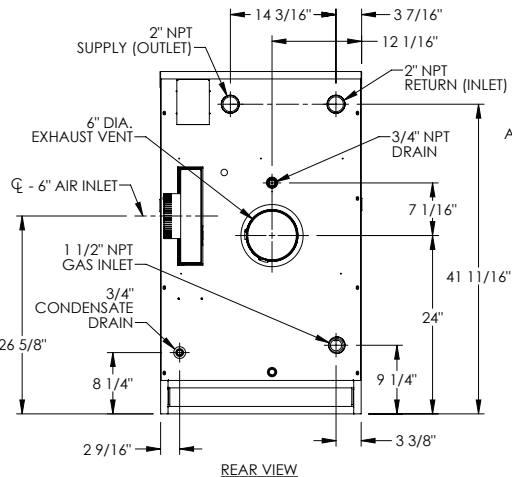
- ✓ Built-in LWCO with Manual Reset for CSD-1 Compliance
- ✓ Fully Modulating Burner with Maximum 5 to 1 Turndown
- ✓ MODBUS Communications
- ✓ Drop-down Control Panel for Easy Wiring Access
- ✓ Rear Connections
- ✓ Domestic Hot Water Priority
- ✓ Combustion Air Filter and Air Proving Switch
- ✓ 30 psi Relief Valve
- ✓ High Temperature Vent and Door Limit Switch

PeerlessBoilers.com

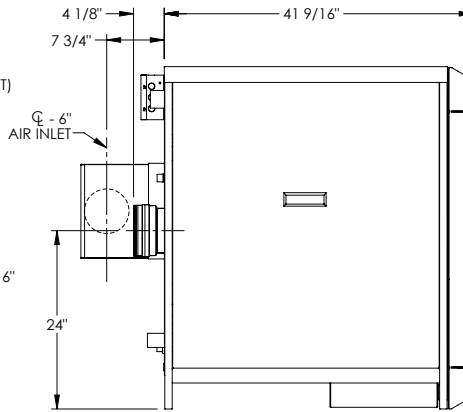
WARRANTY

Visit PeerlessBoilers.com for complete details on standard and extended warranty programs available.

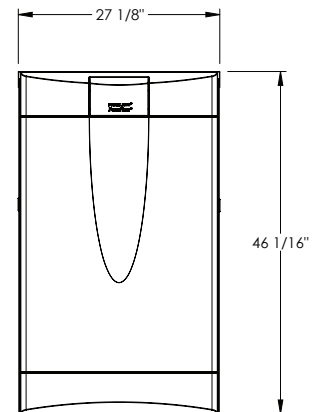
Technical Information



REAR VIEW



LEFT SIDE VIEW



FRONT VIEW

Peerless® PureFire® PFC-625 & PFC-750 BOILER RATINGS



| Boiler Model | Input | | | | Gross Output ² | | Net Water Ratings ¹ | | Thermal Efficiency % |
|--------------|-------------|------------|-------------|------------|---------------------------|-------|--------------------------------|-------|----------------------|
| | Minimum MBH | Minimum kW | Maximum MBH | Maximum kW | MBH | kW | MBH | kW | |
| PFC-625 | 125 | 36.6 | 625 | 183.2 | 612 | 179.4 | 532.2 | 156 | 97.9 |
| PFC-750 | 150 | 43.9 | 750 | 219.8 | 735 | 215.4 | 639.1 | 187.3 | 98.0 |

Note: Consult factory before selecting a boiler for installations with unusual piping and/or pickup requirements, such as intermittent system operation, extensive pipe system, etc.

1. Net water ratings are based on a piping an pickup allowance of 1.15

2. Gross Output and Thermal Efficiency are based on testing in accordance with ANSI/AHRI STANDARD 1500 - 2015 TESTING STANDARD FOR PERFORMANCE RATING OF COMMERCIAL SPACE HEATING BOILERS and are 3rd Party verified.

- 1 Supply/Return Pipes
- 2 Multi-language LCD Display
- 3 Blower
- 4 120V Service Entrance
- 5 Drop-down Control Panel
- 6 Rear Vent Connection
- 7 Service Switch
- 8 Reliable Dual Flame Sensors
- 9 Condensate System
- 10 Gas Valves
- 11 Gas Inlet
- 12 Air Inlet
- 13 Air Inlet Filter

