

Peerless® Boilers

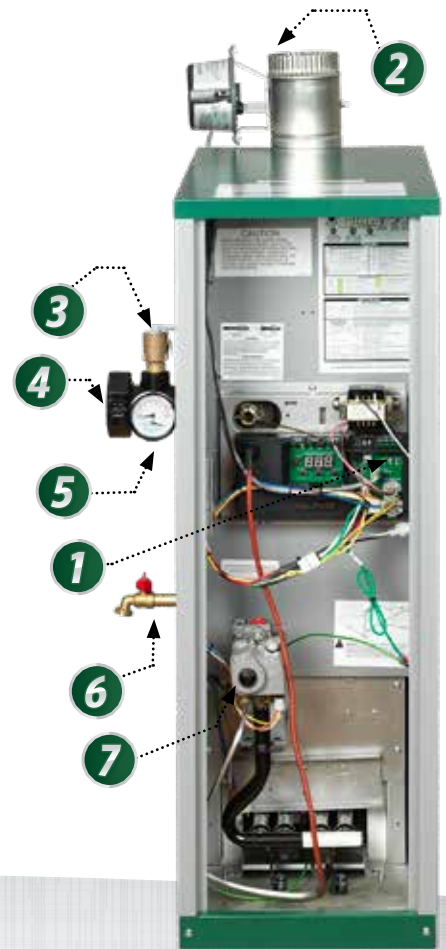
Series MI-x™ Residential Gas Boiler



PeerlessBoilers.com

Series MI-x™ Boiler Features

- ✓ **84% AFUE**
- ✓ **Natural or LP Gas, Cast Iron Boiler**
for Hot Water Heating Systems
- ✓ **Fully Packaged and Ready to Install!**
- ✓ **Cast Iron Sections -**
Factory Tested and Assembled with Steel Push Nipples
- ✓ **Natural Draft Chimney Venting**
(see manual for specific venting instructions)
- ✓ **Non-Combustible Floor Pan**
Included as Standard Equipment
- ✓ **Insulated Powder Coated Steel Jacket**
Reduces Boiler Heat Loss



Standard Equipment

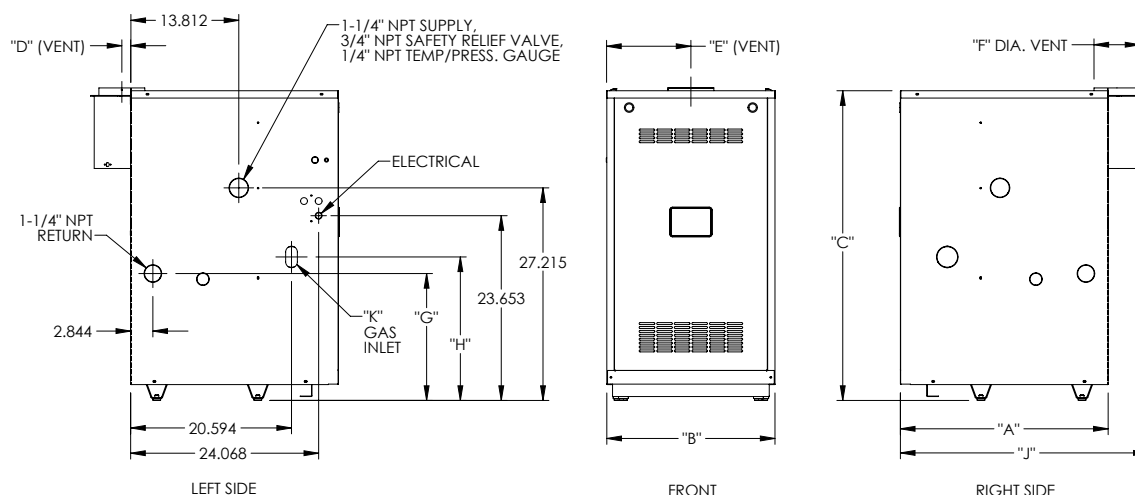
- ✓ **Hydrostat IC Integrated Boiler Control ①**
provides dependable spark ignition, low water cut-off and boiler reset for energy savings! Control also features TWO circulator outputs allowing for DHW priority/heating zone.
- ✓ **Automatic Vent Damper ②**
- ✓ **30 PSI Safety Relief Valve ③**
- ✓ **1-1/4" NPT Supply Manifold ④**
- ✓ **Temperature-Pressure Gauge ⑤**
- ✓ **Drain Valve ⑥**
- ✓ **Step-Opening Redundant Gas Valve ⑦**
- ✓ **Taco Circulator (ECM)**

PeerlessBoilers.com

LIMITED LIFETIME WARRANTY

All residential cast iron boilers include a complete one-year warranty. A limited, lifetime warranty is provided for the cast iron sections of Peerless® residential hot water boilers. Visit PeerlessBoilers.com for complete details.

Technical Information



SERIES MI-x™ BOILER DIMENSIONS

Boiler Model Number	Jacket						Rear of Jacket to c/l of Vent “D”	Left of Jacket to c/l of Vent “E”	Vent Size Diameter “F”	Height to Return “G”	Height to Gas Inlet “H”	Overall Depth “J”	Gas Inlet NPT “K”							
	Depth “A”		Width “B”		Height “C”															
	inch	mm	inch	mm	inch	mm	inch	mm	inch	mm	inch	mm	inch	mm	inch	mm				
MI-x-03	26-3/4	679	14	356	40	1016	1-1/8	29	7	178	4	102	16-1/4	413	18-3/8	467	32	813	1/2	13
MI-x-04	26-3/4	679	16	406	40	1016	1-1/8	29	8	203	5	127	16-1/4	413	18-3/8	467	32	813	1/2	13
MI-x-05	26-3/4	679	19	483	40	1016	1-1/8	29	9-1/2	241	6	152	16-1/4	413	18-3/8	467	32	813	1/2	13
MI-x-06	26-3/4	679	22	559	40	1016	1-1/8	29	11	279	6	152	16-1/4	413	18-3/8	467	32	813	1/2	13
MI-x-07	26-3/4	679	25	635	40	1016	1-1/8	29	12-1/2	318	7	178	16-1/4	413	18-3/8	467	34	864	3/4	19
MI-x-08	26-3/4	679	28	711	40	1016	1-1/8	29	14	356	7	178	16-1/4	413	18-3/8	467	34	864	3/4	19
MI-x-09	26-3/4	679	31	787	40	1016	1-1/8	29	15-1/2	394	8	203	16-1/4	413	18-3/8	467	34	864	3/4	19

SERIES MI-x™ BOILER RATINGS

SERIES MI-x™								Water Content	
Boiler Model Number	Boiler Input		Heating Capacity ²		Net Ratings Water ¹		AFUE ² , %	Gallon	Liter
	MBH	kW	MBH	kW	MBH	kW			
MI-x-03	70	21	59	17	51	15	84	2	7.57
MI-x-04	105	31	88	26	77	23	84	3	11.35
MI-x-05	140	41	117	34	102	30	84	4	15.14
MI-x-06	175	51	146	43	127	37	84	5	18.93
MI-x-07	210	62	176	52	153	45	84	6	22.71
MI-x-08	245	72	205	60	178	52	84	7	26.5
MI-x-09	280	82	234	69	203	60	84	8	30.28

1) Net water ratings based on an allowance of 1.15. Consult factory before selecting a boiler for installations having unusual piping and pickup requirements, such as intermittent system operation, extensive piping systems, etc.

2) Heating Capacity and Annual Fuel Utilization Efficiency (AFUE) ratings are based on U.S. Government test. Before purchasing this appliance, read important information about its estimated annual energy consumption or energy efficiency rating that is available from your retailer.



PeerlessBoilers.com

CUT-MI-x R1 (04/25 - 1M)
Printed in U.S.A.
© 2025 PB Heat LLC. All rights reserved.