

PEERLESS® PINNACLE® HIGH ALTITUDE SUPPLEMENT

The following information is intended to supplement the Installation, Operation, and Maintenance Manual (PI8008) by providing information for Pinnacle Models which are designed for LP installations at greater than 7000 feet above mean sea level. This information is to be used in conjunction with the Installation, Operation, and Maintenance Manual.



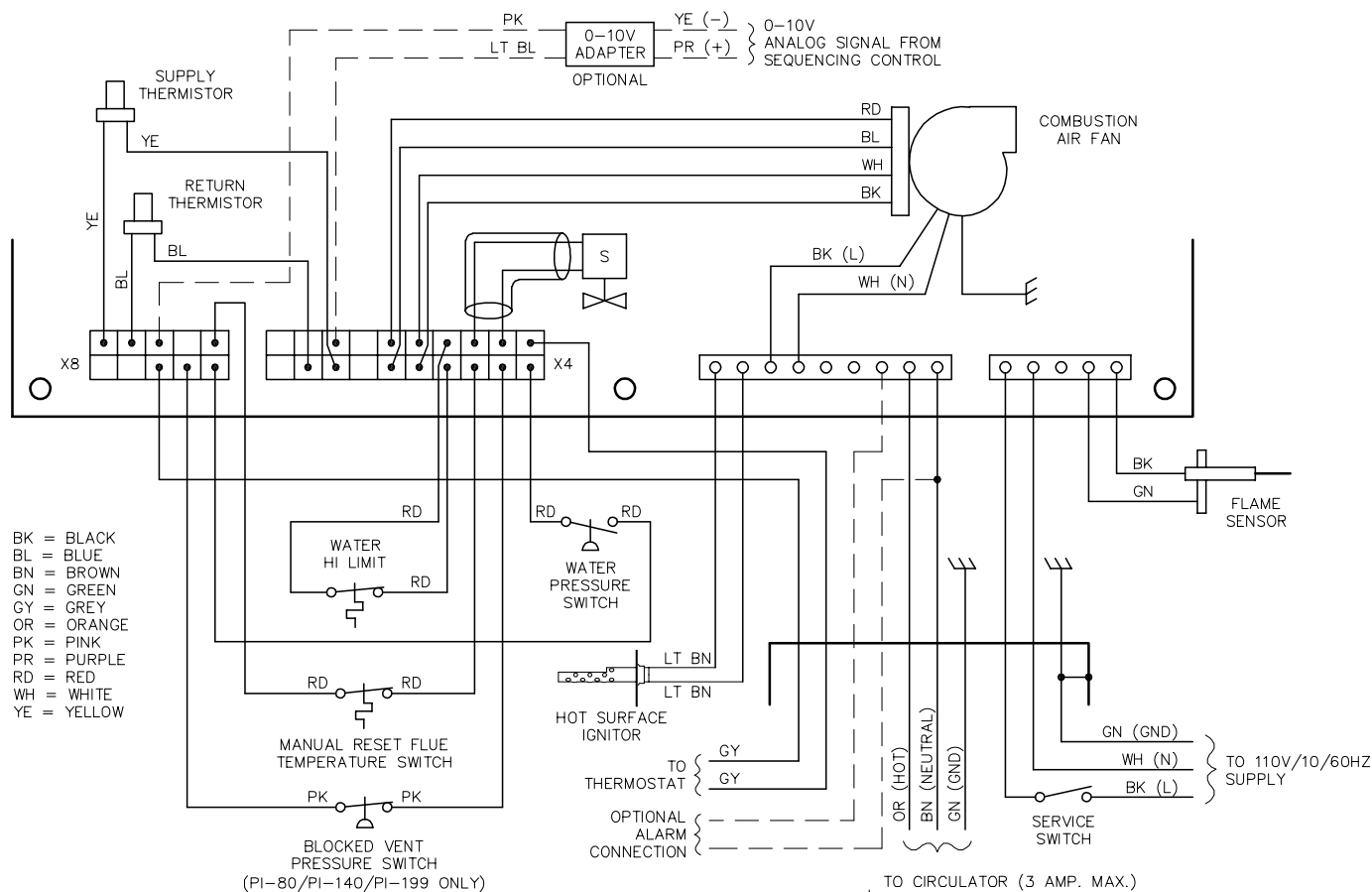
WARNING

Liquefied Petroleum (LP) Gas or Propane is heavier than air and, in the event of a leak, may collect in low areas such as basements or floor drains. The gas may then ignite resulting in a fire or explosion.

The following requirements for liquefied petroleum (LP) gas from the Uniform Mechanical Code, Section 304.6, may be in effect by local codes in your area:

"Liquefied petroleum gas-burning appliances shall not be installed in a pit, basement, or similar location where heavier-than-air gas might collect. Appliances so fueled shall not be installed in an above-grade under-floor space or basement unless such location is provided with an approved means for removal of unburned gas."

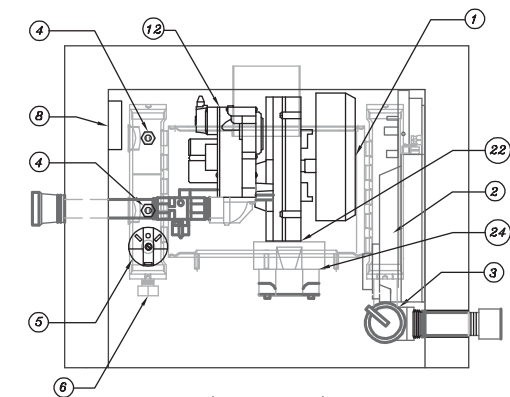
The following Boiler Control Board Wiring Schematic is to be used in lieu of Figure 6.3 in the Electrical Section of the Pinnacle Installation, Operation, and Maintenance Manual (PI8008). This shows the wiring of the Hot Surface Igniter. Note that there are changes to the programming of the P125 board that allow this igniter to operate.



WARNING

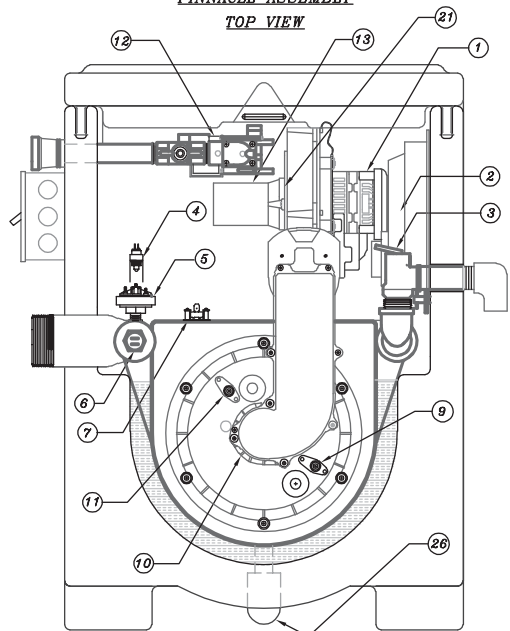
Do not make these wiring changes to boilers with control boards that are configured for spark ignition. Doing so may result in serious injury or death.

The following Repair Parts listings replace those in the Repair Parts Section of the Installation, Operation, and Maintenance Manual (PI8008).



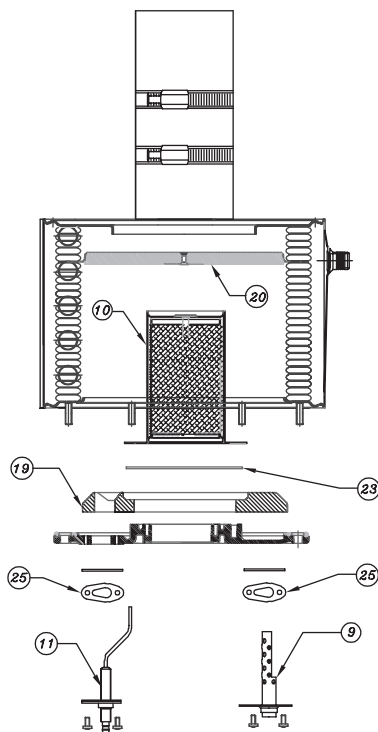
PI-80HA / PI-140HA / PI-199HA

PINNACLE ASSEMBLY
TOP VIEW



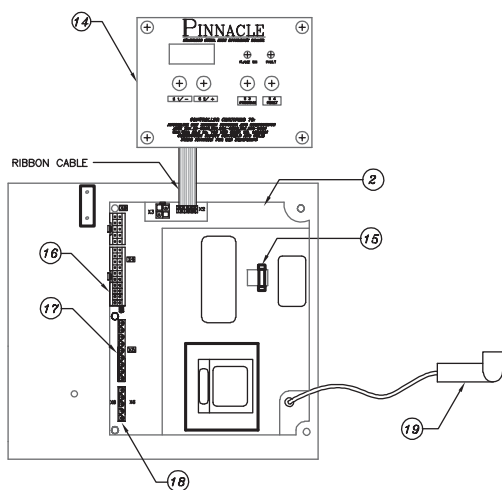
PI-80HA / PI-140HA / PI-199HA

PINNACLE ASSEMBLY
FRONT VIEW



PI-80HA / PI-140HA / PI-199HA

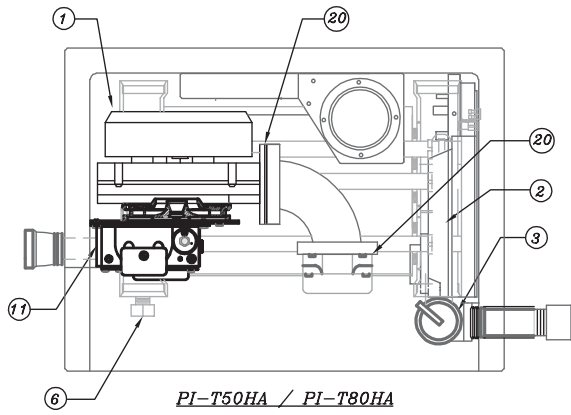
BURNER ASSEMBLY



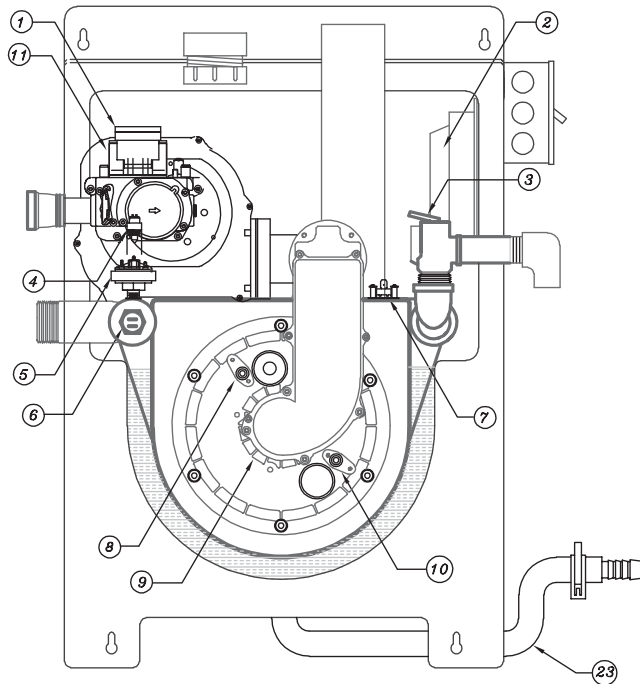
P125 CONTROL BOARD ASSEMBLY

BOILER COMPONENTS

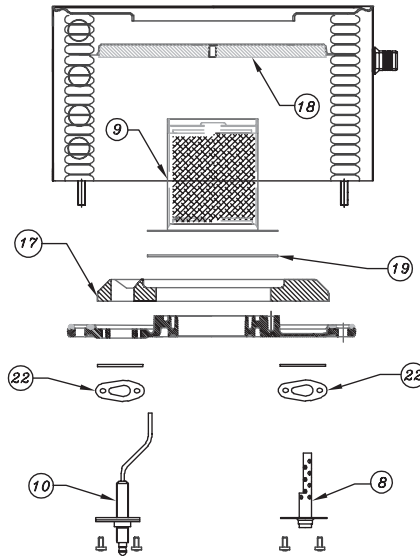
ITEM NO.	DESCRIPTION	STOCK CODE		
		PI-80HA	PI-140HA	PI-199HA
1	COMBUSTION AIR BLOWER (INCLUDES OUTLET GASKET)	91423	91424	91425
2	P125 CONTROL BOARD (INCLUDES TRANSFORMER)	91501	91502	91503
3	RELIEF VALVE - 30 PSI		91430	
4	SUPPLY/RETURN THERMISTOR		91435	
5	MINIMUM WATER PRESSURE LIMIT SWITCH		91427	
6	HIGH WATER TEMPERATURE LIMIT SWITCH		91410	
7	HIGH VENT TEMPERATURE LIMIT SWITCH (210°F)		91429	
8	BLOCKED VENT PRESSURE SWITCH		91480	
9	HOT SURFACE IGNITOR		91485	
10	BURNER (INCLUDES GASKET)	91407	91408	91409
11	FLAME SENSOR (INCLUDES GASKET)		91412	
12	GAS VALVE		91426	
13	VENTURI	91481	91482	
14	P125 DISPLAY MODULE (INCLUDES RIBBON CABLE)		91461	
15	CONTROL BOARD FUSE		91471	
16	WIRING HARNESS - 10/20 PIN LOW VOLTAGE	91463	91462	
17	WIRING HARNESS - 9 PIN, 120 VOLT	91487	91486	
18	WIRING HARNESS - 5 PIN, 120 VOLT		91473	
19	MOLDED CERAMIC REFRACTORY		91433	
20	CERAMIC TARGET WALL		91432	
21	COMBUSTION AIR BLOWER INLET GASKET		91492	
22	COMBUSTION AIR BLOWER OUTLET GASKET	91443	91441	
23	BURNER GASKET		91440	
24	SPACER BLOCK OUTLET GASKET		91442	
25	IGNITOR ELECTRODE/FLAME SENSOR GASKET		91491	
26	CONDENSATE DRAIN TRAP	91494	91493	91494



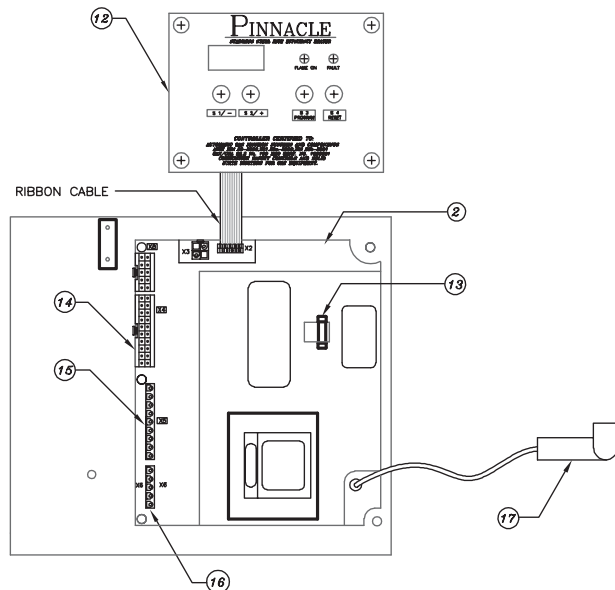
PI-T50HA / PI-T80HA
PINNACLE ASSEMBLY
TOP VIEW



PI-T50HA / PI-T80HA



PI-T50HA / PI-T80HA
TOP FLUE WALL MOUNTED
BURNER ASSEMBLY



P125 CONTROL BOARD ASSEMBLY

BOILER COMPONENTS

ITEM NO.	DESCRIPTION	STOCK CODE	
		PI-T50HA	PI-T80HA
1	COMBUSTION AIR BLOWER (INCLUDES OUTLET GASKET)	91423	91423
2	P125 CONTROL BOARD (INCLUDES TRANSFORMER)	91506	91507
3	RELIEF VALVE - 30 PSI		91430
4	SUPPLY/RETURN THERMISTOR		91435
5	MINIMUM WATER PRESSURE LIMIT SWITCH		91427
6	HIGH WATER TEMPERATURE LIMIT SWITCH		91410
7	HIGH VENT TEMPERATURE LIMIT SWITCH (210°F)		91429
8	HOT SURFACE IGNITOR (INCLUDES GASKET)		91485
9	BURNER (INCLUDES GASKET)	91472	91407
10	FLAME SENSOR (INCLUDES GASKET)		91412
11	GAS VALVE	91478	91479
12	P125 DISPLAY MODULE (INCLUDES RIBBON CABLE)		91461
13	CONTROL BOARD FUSE		91471
14	WIRING HARNESS - 10/20 PIN LOW VOLTAGE		91464
15	WIRING HARNESS - 9 PIN, 120 VOLT		91486
16	WIRING HARNESS - 5 PIN, 120 VOLT		91473
17	MOLDED CERAMIC REFRACTORY		91433
18	CERAMIC TARGET WALL		91432
19	BURNER GASKET		91440
20	ELBOW INLET/OUTLET GASKET		91500
21	IGNITOR/FLAME SENSOR GASKET		91491
22	CONDENSATE DRAIN TRAP		91497



PeerlessBoilers.com

PB HEAT, LLC

P.O. BOX 447 • NEW BERLINVILLE, PA 19545-0447

WEB-2 PI8079 R0 (11/04-5C)
Printed in U.S.A.