

# Peerless® Boilers



PeerlessBoilers.com

## Series PBC™ Combi

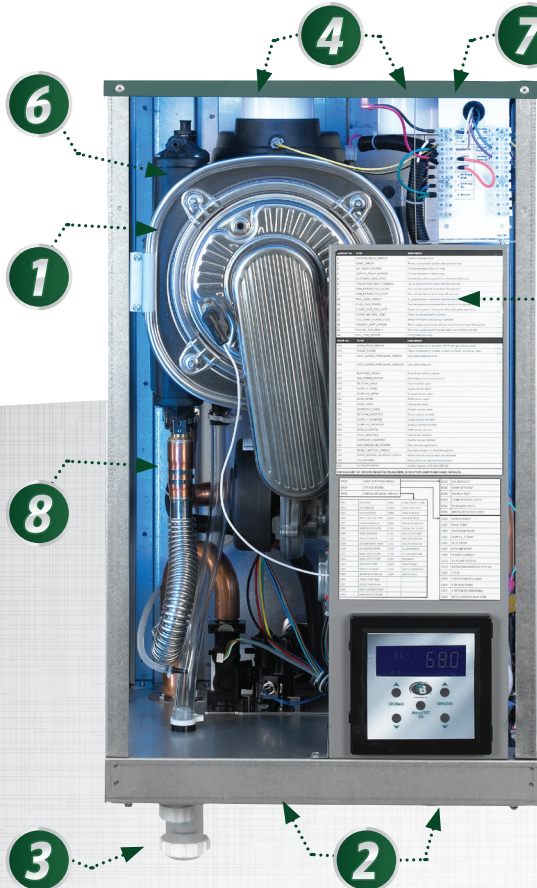
### Residential High-Efficiency Condensing Gas Boiler



**PRODUCT DEVELOPED & ASSEMBLED IN THE U.S.A.!**

### Series PBC™ Boiler Features

- ✓ **95% Efficient** - ENERGY STAR® Certified!
- ✓ **Combination Boiler Available for Natural or LP Gas**
- ✓ **3 Sizes Available Providing up to 5.2 GPM of Domestic Hot Water (Industry Leading)!**
- ✓ **Up to 10:1 Turndown**
- ✓ **Direct Vent** - Uses 2" or 3" Piping (PVC, CPVC, Polypro & AL294C)
- ✓ **Easy-to-Follow Control Menu for Set-up and Service**
- ✓ **Environmentally Friendly** - Low NO<sub>x</sub> and Low CO<sub>2</sub> Emissions



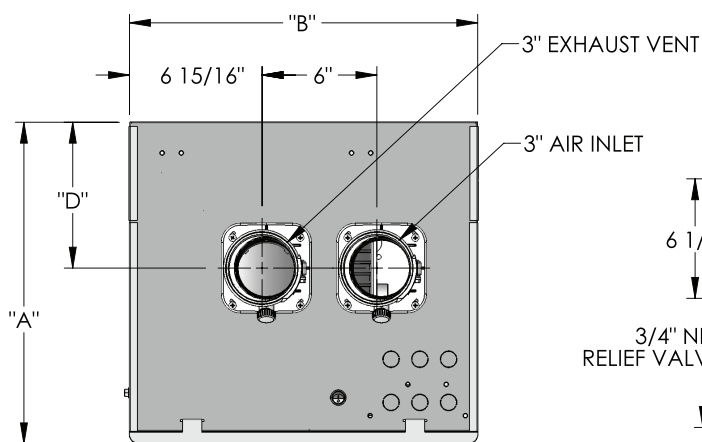
- ✓ **Heat Exchanger** - Isothermic and Stainless Steel **1**
- ✓ **DHW and Heating Supply/Return Piping** **2**
- ✓ **Condensate Trap** **3**
- ✓ **Vent Piping** **4**
- ✓ **Control Panel** - Pivots for Easy-to-Access Components **5**
- ✓ **Air Vent to Shorten Purge Time** **6**
- ✓ **Boiler Vent Adapter** - Fits All Approved Materials **7**
- ✓ **Spacious Vestibule** **8**

### WARRANTY

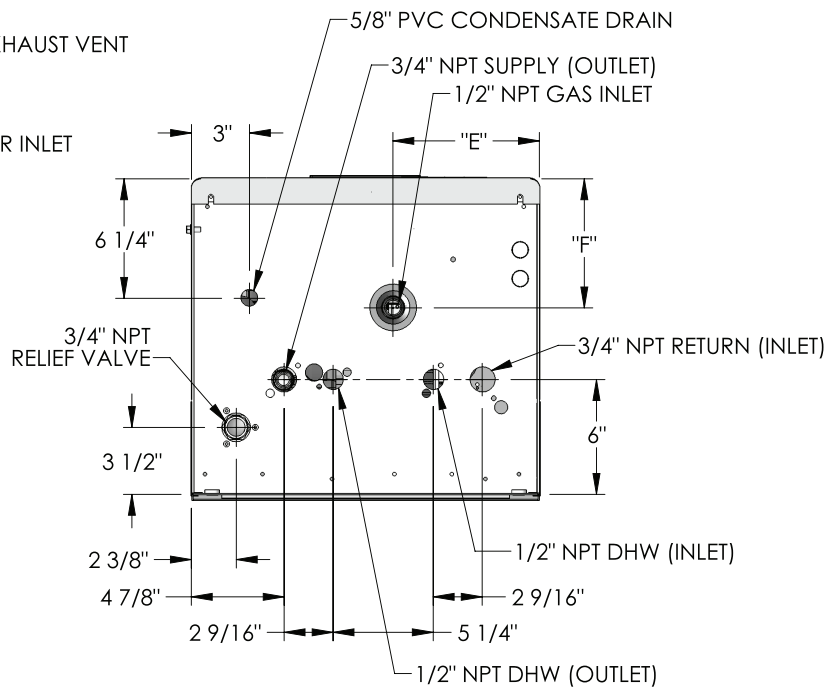
The Series PBC™ boiler includes a full one-year warranty. A five-year parts and one-year labor warranty is also provided (labor coverage starting on day 91) if the boiler is fully registered (via warranty card or online registration). In addition, the heat exchanger is covered by a 12-year limited warranty. Visit [PeerlessBoilers.com](http://PeerlessBoilers.com) for complete details.

[PeerlessBoilers.com](http://PeerlessBoilers.com)

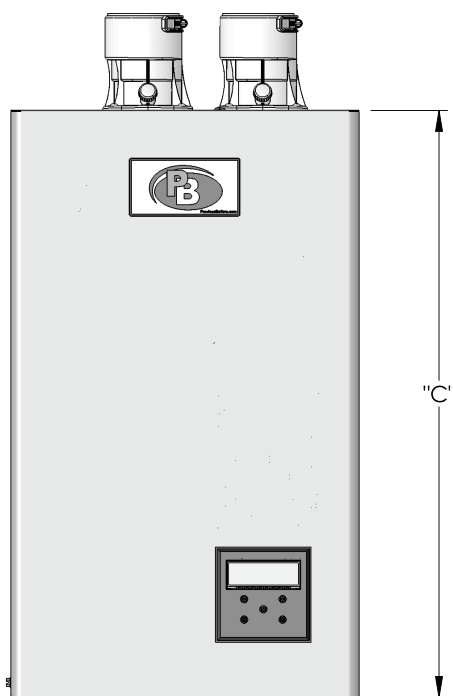
# Technical Information



TOP VIEW



BOTTOM VIEW



FRONT VIEW

## SERIES PBC™ BOILER DIMENSIONS

Boiler Model	"A"	"B"	"C"	"D"	"E"	"F"
PBC-34	16-13/16"	18-3/16"	30-11/16"	7-13/16"	7-5/8"	7-3/16"
PBC-40	16-13/16"	18-3/16"	30-11/16"	7-13/16"	6-15/16"	7-5/8"
PBC-52	18-13/16"	18-3/16"	30-11/16"	6-1/16"	6-15/16"	7-5/8"



## SERIES PBC™ BOILER RATINGS



Boiler Model	CH Input (MBH)		DHW Input (MBH)		Heating Capacity <sup>2</sup> (MBH)	Net Ratings Water <sup>1</sup>	AFUE <sup>2</sup> (%)	DHW Output @70° Rise (GPM)	DHW Turndown
	Min.	Max.	Min.	Max.					
PBC-34	15.5	80	15.5	130	76.0	66.1	95.1	3.4	8.3:1
PBC-40	15.5	100	15.5	155	95.2	82.8	95.2	4	10.0:1
PBC-52	24.5	120	24.5	199	114.4	99.5	95.3	5.2	8.1:1

Note: As an ENERGY STAR® Partner, PB Heat has determined that these firing rates meet the ENERGY STAR® guidelines for energy efficiency.

1. Consult factory before selecting a boiler for installations having unusual piping and pickup requirements, such as intermittent system operation, extensive piping systems, etc.
2. Heating Capacity and Annual Fuel Utilization Efficiency (AFUE) ratings are based on U.S. Government test. Before purchasing this appliance, read important information about its estimated annual energy consumption or energy efficiency rating that is available from your retailer.

See installation guide for proper installation instructions.



PeerlessBoilers.com

CUT-PBC R2 (8/22-1M)

Printed in U.S.A.

© 2022 PB Heat LLC. All rights reserved.