

Peerless® Boilers

Series GM™ Gas Boiler



PeerlessBoilers.com

Series GM™ Boiler Features

- ✓ **Packaged Boiler** for Hot Water Heating Systems
- ✓ **Gas-fired Boiler** for Natural or LP Gas
- ✓ **Cast Iron Sections** - Factory Tested and Assembled with Steel Push Nipples
- ✓ **Natural Draft Chimney Venting**
- ✓ **Deluxe Powder Coated Steel Jacket** - Reduces Boiler Heat Loss
- ✓ **Safety Controls** - Including Flame Rollout Shut-off Switch and Vent Safety Switch

Combine Series GM™ boilers in single, multiple or modular arrangements with the Peerless® Partner® indirect-fired water heater to create a customized Peerless® FLEX-HEAT® hydronic comfort system!

(see PeerlessBoilers.com FLEX-HEAT® page for more information)



Standard Equipment

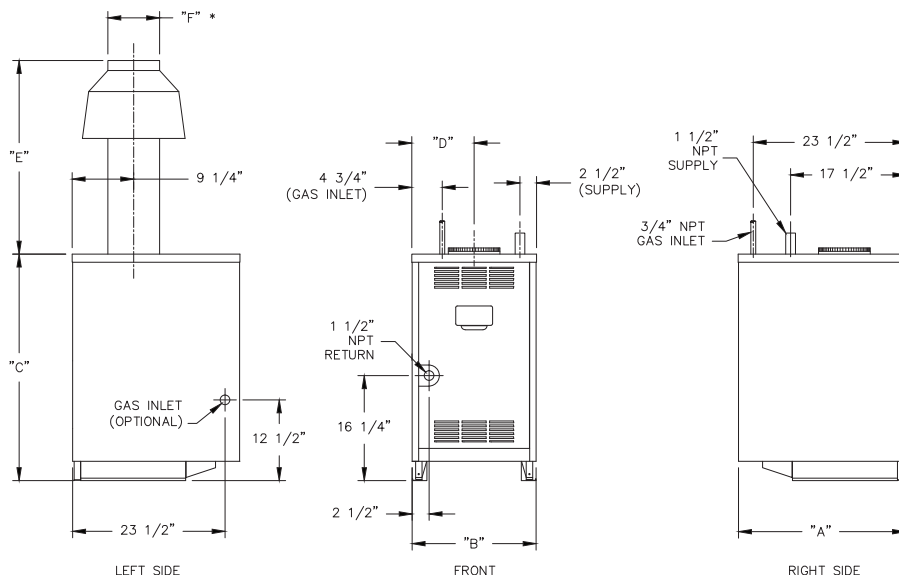
- ✓ **Dependable Spark Ignition System**
- ✓ **30 PSI Relief Valve (unmounted)**
- ✓ **Boiler Reset Control with Low Water Cut-off for Increased Efficiency and Safety**
- ✓ **Drain Valve (unmounted)**
- ✓ **Temperature-Pressure Gage (unmounted)**
- ✓ **Vertical Draft Hood**
- ✓ **Vent Damper (optional for 7-8 section)**

PeerlessBoilers.com

WARRANTY

All Peerless® cast iron boilers include a full warranty. Visit PeerlessBoilers.com for complete details.

Technical Information



SERIES GM™ BOILER DIMENSIONS

Boiler Model Number	Jacket			Left of Jacket to C/L of Vent "D"	Top of Jacket to Vent Connector "E"	Vent Size "F" Dia. **
	Length (Depth) "A"	Width "B"	Height "C"			
GM-e-05	25-3/4"	19-1/4"	35-1/4"	9-3/4"	29"	7" **
GM-e-06	25-3/4"	22-3/4"	35-1/4"	11-1/2"	30"	8" **
GM-e-07*	25-3/4"	26-1/4"	35-1/4"	13-1/4"	31"	10"
GM-07	25-3/4"	26-1/4"	35-1/4"	13-1/4"	31"	10"
GM-08	25-3/4"	29-3/4"	35-1/4"	15"	31"	10"

*Special Order Only
** Vent Diameter is determined by outlet diameter of vent reducer (provided) installed on outlet of vent damper.
8" to 7" reducer on GM-e-05, 9" to 8" reducer on GM-e-06.

SERIES GM™ BOILER RATINGS

AHRI CERTIFIED® www.ahridirectory.org							Input, kW	Output, kW	Net Ratings Water, kW
Boiler Model Number	Input, MBH	Output ^{1/2} , MBH	Net Ratings Water ³ , MBH	Intermittent Ignition AFUE ¹ , %	Thermal Efficiency ² , %	Combustion Efficiency ² , %			
GM-e-05	214.5	182	158	84.2	-	-	62.9	53.3	46.3
GM-e-06	268	226	197	84.0	-	-	78.5	66.2	57.7
GM-e-07*	299	252	219	84.2	-	-	87.6	73.9	64.2
GM-07	342	275	239	-	80.3	82.5	100.2	80.6	70.0
GM-08	399	320	278	-	80.3	82.5	116.9	93.8	81.5

*Special Order Only

1) Output is Heating Capacity for models with inputs <300 MBH and Gross Output for models with inputs ≥300 MBH. Heating Capacity and Annual Fuel Utilization Efficiency (AFUE) ratings are based on U.S. Government test.

2) Gross Output Rating, Thermal Efficiency and Combustion Efficiency determined in accordance with AHRI requirements.

3) Net water ratings based on an allowance of 1.15. Consult factory before selecting a boiler for installations having unusual piping and pickup requirements, such as intermittent system operation, extensive piping systems, etc.



PeerlessBoilers.com

CUT-GM R4 (3/24 - 1M)
Printed in U.S.A.
© 2024 PB Heat LLC. All rights reserved.